

NZDF Auckland region projects

Name Defence building and infrastructure projects

Sector Building and Infrastructure

Project size Whenuapai - \$326 million
Devonport - \$233 million
Papakura - \$94.5 million

Looking for New constructors and building material suppliers to complete these projects.

Web-links • <http://campsandbases.nzdf.mil.nz/resources/defence-estate-regeneration-plan-refresh/>

New Zealand Defence Force is upgrading buildings and infrastructure across three sites in the Auckland region – Whenuapai, Devonport and Papakura

Summary

REGENERATING THE NZDF ESTATE

New Zealand Defense Force is spending \$653 million over the next three years on a regeneration and refresh plan for its camps and bases in the Auckland region. Over the next two decades the New Zealand Defence Force is undertaking a regeneration project like no other in New Zealand, with the biggest ever renewal of their New Zealand Defence Force camps and bases now underway.

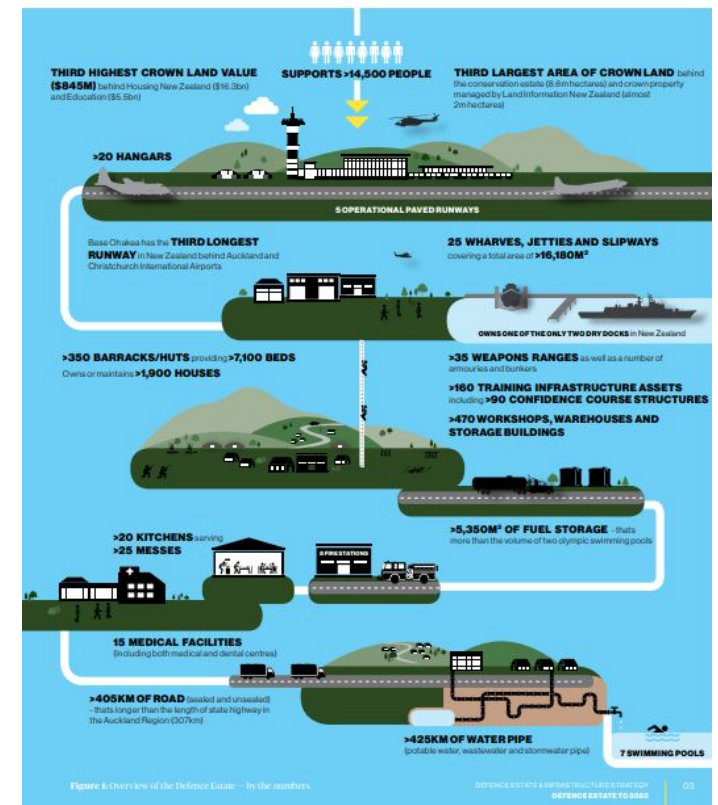
To be the best they can be they need the right tools for the job – and that includes their infrastructure buildings and facilities.

Access to NZDF sites

Access to NZDF sites and buildings may be controlled by security guards and/or barrier gates. Each site or building has its own security requirements that you will need to adhere to if you will be working there. You may require an access pass and have to sign in and out of the site or building. Or you may be required to be escorted on and off the site. Security guards may also conduct random checks of access passes or vehicles.



81,000HA ACROSS
NINE TWO
MAIN CAMPS AND BASES | MAIN TRAINING AREAS
AND A NUMBER OF REGIONAL SUPPORT FACILITIES



Ongoing redevelopment project programme

RNZAF Base Auckland Whenuapai

Completed:

☒

Aviation Medical Unit (Phase 1 of Whenuapai Medical Facility)

☒

Maritime Helo Project

☒

Aviation Fuel Farm upgrade

☒

Vincent Barrack Block

☒

SATCOM Anchor Station☒**What's next?**

A new gymnasium

Aeronautical medical evacuation facilities

Unit facilities for Squadrons

Flight line fencing to make sure visitors to the base are kept away from flight areas

Hardstand replacement.

The transition from supporting P3s to the new Future Air Mobility Capability will see change on some parts of the Base. Focus will continue on maintaining barrack, office and recreational/training facilities.

Devonport Naval Base

Completed:

☒

Seamanship Training Aids – Dryside

☒

Seamanship Training Aids – Waterside

☒

Philomel Landing Steps (Small Boat)☒☒☒☒**What's next?**

There are a number of projects scheduled for the Base.

Wharf-side:

Calliope South Wharf Upgrade and operational extension plus utility support upgrades including 60Hz systems upgrading.

Replacement of crane operating systems for both the Liebherr Dry-dock and Hagglunds Calliope South crane NFI system upgrade

Calliope West extension and strengthening

Water-side support:

A small-boat wash down facility

New office and light workshops adjacent to the waterside

Base:

A new H.Q. building to blend Philomel, FM, MCC, DSS, FPTO functions in one location.

Accommodation facility

Upgrading of the high-voltage transformer systems on Base

New offices, meeting rooms and secure spaces for NZDF lodger units located within the Naval Base

Narrow Neck:

New Learning Spaces and combined Fitness Centre and Training/Drill Shed at Narrow Neck (TBC).

Papakura Military Camp

Completed:

☒

Special Operations Craft Building

☒

Special Operations Vehicle Building

☒

Cycle of Training Barracks☒☒**What's next?**

A multi-purpose training and accommodation facility is planned to start construction in the early 2020s. This will enable units from outside of Auckland, including our international partners, to train there.

Obtaining a National Security Clearance

The vetting process for all National Security Clearances required by government agencies is carried out by the New Zealand Security Intelligence Service (NZSIS). NZDF does not control or affect this process.

The time the vetting process takes depends on a range of factors, but it may take some months. This needs to be factored in when planning your work with NZDF. Your contract with NZDF can likely start without your staff having received clearance, but they will not be able to access classified information or secure sites without having received the level of clearance required to do so. To be eligible for a National Security Clearance, you usually need to be a New Zealand citizen or be an Australian, Canadian, British or American citizen who holds a Residence Class Visa for a certain length of time.

That means that any of your employees who are not New Zealand citizens may not be eligible to be security-cleared, which may affect your eligibility to contract with NZDF. Each person applying for National Security Clearance will need to complete an online questionnaire about their personal and professional life. The level of detail needed will depend on the level of security clearance – the higher the clearance, the more detail needed. Your employees will be asked to provide information about their previous residences, employment, travel, current and past relationships and extended family. They will also be asked to provide personal and professional referees, who will be sent an online questionnaire to fill in. For the higher clearance levels, they may also be interviewed.

Looking for:

New constructors and building material suppliers to complete these projects.

For more information please contact

Aldrin Thayalakal
Investment Specialist — Infrastructure
Auckland Unlimited
M +64 21 757 979
E aldrin.thayalakal@aucklandnz.com



Devonport Naval Base



Whenuapai Airforce Base



Papakura Army Base